



Accessible, affordable & sustainable housing solutions
to help get more **Papakāinga** developments across the line.

PAPAKĀINGA
HOMES

Nau mai haere mai. Welcome to Papakāinga Homes.

Papakāinga Homes are part of the Matou Kainga Māori housing & Development strategy that delivers exclusively designed housing solutions that promise significant cost savings and other benefits to Marae Whānau and Hapū looking to build homes on their land.

- Close to 20% savings on standard market build rates.
- Fast build times, 3-5 days weather tightness and 5-6 weeks fully built.
- Minimal build waste making for clean sites and great for the environment. (NO LAND FILL RUBBISH).
- Supervised hammer hand skilled labour saving on costs of labour and helps avoid delays.
- Our housing solutions are fully manufactured in New Zealand.
- We can fully fund your development.
- Housing plans are building code compliant.
- We use only high quality building materials and superior interior fit out and appliances.
- No crane required on larger housing plans, a HIAB is sufficient.
- We are a philanthropic fund that shares and invests profits back into building more homes for Māori.



Innovation



2.7m standard stud height for a roomy feel.



Prefabrication exterior wall panels is our preferred build method. Unlike traditional housing practices where frames are measured, built, and erected on site, our prefab walls are manufactured in a controlled environment ready for delivery and installation same day.



Papakāinga Homes truss and pre-nail are locally made and manufactured and come with Oriented Strand Board.



Healthy affordable living is fundamental to us. That's why all our exterior walls are specified with 140 x 45 laminated veneer lumber. This larger cavity and no nogs allow Papakāinga Homes to achieve an external wall insulation rating of R4.0 insulation in the walls.



Our range of windows and doors are custom-built for New Zealand weather conditions with a performance rating exceeding New Zealand Standards thermally broken low E argon gas window joinery toughened glass.



Enjoy improved thermal efficiency. Meaning a drier, warmer home in winter, reduced heat in summer and lower heating and cooling bills throughout the year.



Papakāinga Homes supports local industry. Our framing is 100% renewable timber resource.

Partnership

In partnership with local manufacturers our homes offer a wide range of styles and flexible design options to suit your requirements.

Uno Kitchens offer an extensive range of colours to choose from (+200) depending on your preference. Uno is proudly made in New Zealand and comes with a 5-year warranty. Complementing your UNO Kitchen is an extensive range of Robinhood Appliances. Smart technology combined with minimalist design, Robinhood provides functional solutions within the kitchen and laundry areas.

Papakāinga Homes is supplied by the might of our collective partners and co-operative approach to purchasing, combined with our partnership with ITM their size, and wide location's ensures an increased level of recognition and support from New Zealand and international suppliers. ITM is proudly New Zealand owned and operated.

Surefoot Footings are a concrete free alternative to traditional piling and concrete slab foundations that are revolutionising the foundation industry. Compliant with NZ building conditions and an accepted engineered foundation, Surefoot strength, hybrid 'all-in-one' steel footing with timber option house piles are specifically designed to increase efficiency when resisting gravity, uplift, shear and moment loads.

Surefoot footings are job specific and designed according to the soil conditions of your site. Quick and easy to install footings can be used on a wide range of foundation projects, meeting all compliance, and building regulations.



UNOkitchens



Papakāinga Home Options

Pukerangi (22.4sqm) Studio	06
Kotuku (30sqm) 1 Bedroom	07
Ranui (30sqm) 1 Bedroom plus study	08
Omaio (62.9sqm) 2 Double Bedrooms	09
Ohakune (78.7sqm) 2 Double Bedrooms	10
Waimana (99.1sqm) 3 Double Bedrooms	11
Aranui (104.3sqm) 4 Double Bedrooms	12
Manaroa (133.3sqm) 4 Double Bedrooms Split Level	13

Pukerangi - 22.4sqm

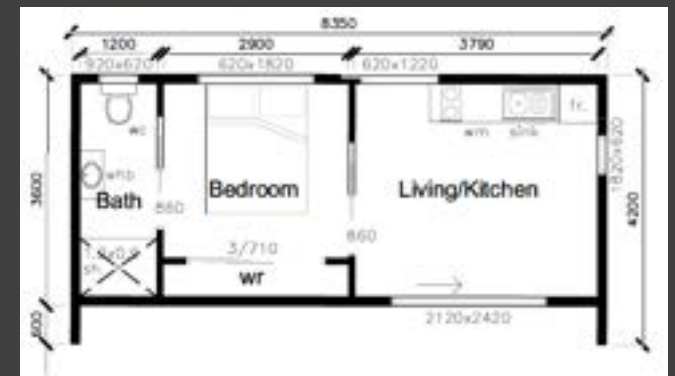
- Spacious combined living & bedroom that can easily fit a queen bed
- Ensuite bathroom
- Quality kitchenette
- Double glazing, thermally insulated aluminium windows
- Ranchslider indoor outdoor entry





Kotuku - 30sqm

- Single bedroom with built-in wardrobe
- Bathroom (vanity / Shower / Toilet)
- Open plan living
- Quality kitchenette
- Double glazing, thermally insulated aluminium windows
- Sliding doors / separate living, bedroom and bathroom areas



Ranui - 30sqm

- Single bedroom with separate study area
- Open plan living area
- Bathroom (vanity / vanity / toilet)
- Double glazing, thermally insulated aluminum windows
- Ranch slider with great indoor-outdoor flow





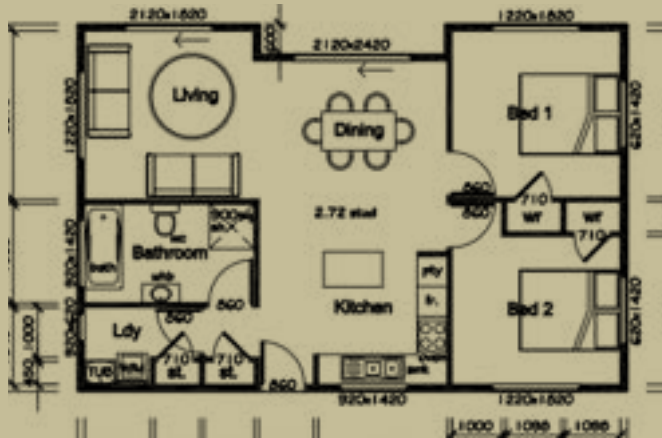
Omaio - 62.9sqm

- 2 Double bedrooms
- Open plan kitchen and dining area
- Built in wardrobes
- Extra storage / linen cupboard
- Single bathroom



Ohakune - 78.7sqm

- 2 Double bedrooms with wardrobe space in each
- Spacious open plan kitchen & dining
- Separate laundry
- Large bathroom with separate bath and shower
- 2 ranchsliders off lounge and master bedroom





Waimana - 99.1sqm

- 3 Double bedrooms
- Master bedroom with walk in wardrobe and ensuite
- Large open plan kitchen & dining area
- Separate laundry
- Large modern living area with double ranch slider allowing indoor/outdoor flow.
- 2 bathrooms (including ensuite)



Aranui - 104.3sqm

- 4 Double bedrooms with built-in wardrobes in each
- Spacious open-plan kitchen & dining area
- Master bedroom with large wardrobe and ensuite
- Separate linen cupboard / storage space





Manaroa - 133.3sqm

- Modern split level design
- 4 large bedrooms
- Master with extra wardrobe space and ensuite
- 3 bathrooms including ensuite
- Large open kitchen & dining area





Standard Inclusions

- Timber frame & truss construction.
- Timber subfloor.
- Duragrove / Nuline BGC exterior cladding.
- Surefoot foundations / materials only subject to engineering design.
- UNO Kitchen and Robinhood appliances.
- DVS Home Ventilation System
- Heatpump (heating and cooling)

Upgrade Options (POA)

- Solar power systems.
- Composting toilets.
- Rainwater harvesting systems.
- Septic tank systems.
- Weathertex, Timber BBWB Exterior cladding options.
- Gable or Mono-Pitch roof options.



If you're ready to build your Papakāinga, contact us to help you fund and build it fast and hassle free.

A MEMBER OF THE MANA TAPIRI GROUP COLLECTIVE

Greenwich Property Consultants Limited
PO BOX 3216, Greerton, Tauranga 3142 NEW ZEALAND

0800 624 763 | admin@gpcs.co.nz | www.gpcs.co.nz





www.papakaingahomes.co.nz

Contact us:

0800 624 763 | www.gpcs.co.nz | sales@gpcs.co.nz

Supplied by

